

PLAYBILL®

Northwood Arts
Northwood High School (Irvine, CA)
Irvine, CA

Northwood Arts Presents



THE THEORY OF RELATIVITY

JAN 11 – 14, 2022

AT 7 PM

AMDA

College of the Performing Arts
NEW YORK CITY • LOS ANGELES

Study and perform
in **New York City**
and **Los Angeles**

Earn your degree
online

ACT • SING • DANCE

AUDITIONS

Undergraduate and
Graduate Degrees

High School and
Gap Programs



**Schedule
Your
Audition
Now!**

amda.edu/auditions
(323) 490-1284

**Northwood High School (Irvine, CA)
Northwood Arts**

PRESENTS

THE THEORY OF RELATIVITY

Music by
Neil Bartram

Lyrics by
Neil Bartram

Book by
Brian Hill

Stage Management Team
Emma Jacobs
Shreya Srinivasan
Mary Indes
Viraj Kadakia

Lighting & Sound Design
Gary Magino

Technical Direction
Blake Yavuz

Publicity, Box Office &
House Management
Victoria Gong
Annie Li

Assistant to the Director
Rey Shankar

Directed by
Ben Case, Danyelle Dunavold, Zach Halop, Keiko Halop, Judy Scialpi

Originally produced by Goodspeed Musicals, East Haddam, CT

The Musical was presented at the National Alliance for
Musical Theatre's Festival of New Musicals in 2015

The Theory of Relativity was developed at the Canadian Music Theatre Project, Sheridan College in
Oakville, Ontario, Canada.

Theory of Relativity is presented through a special arrangement with Music Theatre International
(MTI). All authorized performance materials are also supplied by MTI.
www.mtishows.com

SONGS

Person A	Ensemble
Relativity	Ensemble
I'm Allergic to Cats	Kyle
Cake (Part 1)	Catie
Pi (Part 1)	Charlie
Great Expectations	Ensemble
Relativity (Reprise #1)	Ensemble
Footprint	Ze Xi Isaac
Cake (Part 2)	Catie
Pi (Part 2)	Charlie
Lipstick	Charlie & Rey
Apples & Oranges	Alyssa & Corina
Promise Me This	Aditi
Cake (Part 3)	Catie
Pi (Part 2 1/2)	Charlie
Julie's Song	Isabella
Pi (Part 3)	Charlie
Person A (Reprise)	Ensemble
Manicure	Calista
Nothing Without You	Ensemble

CAST

Cast Members

Performer	Charlie Comer
Performer	Isabella Dufault
Performer	Elena Higuchi
Performer & Swing	Catie Jamieson
Performer	Corina Lee
Performer & Swing	Ze Xi Isaac Lee
Performer	Kyle Lien
Performer	Calista Nguyen
Performer	Riya Roy
Performer	Delanye Saunders
Performer & Assistant to Director	Rey Shankar
Performer	Aditi Sreenivas
Performer	Alyssa Wu
Performer	Coco Wu
Performer	Sophia Yang

Orchestra

Keyboard 1, Viola	Mei Ono*
Keyboard 2	Howard Wu
Guitar	Adam Bauer
Guitar	Yian Wang
Bass	Brendan Birozy
Percussion	Matt Dimaandal

*Concertmaster

CREW

Crew Members

Technical Director	Blake Yavuz
Production Stage Manager	Emma Jacobs
Assistant Stage Manager	Shreya Srinivasan
Assistant Stage Manager	Mary Indes
Stage Manager Intern	Viraj Kadakia
Lighting Designer/ Master Electrician & Sound Designer/ Engineer	Gary Magino
Associate Lighting Designer	Kiara Kuriakose
Costumes Coordination	Abigail Wu
Makeup & Hair Coordination	Ashley Wang
Co-Publicity Manager & House Manager	Victoria Gong
Co-Publicity Manager & Box Office Manager	Jiayi (Annie) Li
Lighting Crew	Elisa Bae
Carpentry & Running Crew	Aadya Batra
Paint Crew	Kaia Bui
Sound Crew	Zoe Caagoy
Paint Crew & Usher	Laura Garzon Cardenas
Publicity & Box Office Crew	Angela Chen
Properties Crew	Toby Cole
Publicity Crew & Usher	Katie Damko
Carpentry Crew & Box Office Crew & Usher	Dristi Goswami
Sound Crew	Zhuoyi (Zoe) Guo
Carpentry Crew	Ashley Huynh
Carpentry Crew	Inaya Jaffer
Paint & Publicity Crew	Luca (Alyssa) Julian
Carpentry & Running Crew	Cole Kim
Carpentry & Box Office Crew	Haven Kim
Paint Crew & Usher	Sara Kim
Lighting Crew	Ellie Lan

CREW

Crew Members (continued)

Sound Crew	Shannon Lee
Paint Crew	Rumi Liao
Properties Crew	Tae Mee (Tammy) Lim
Paint Crew & Usher	Juliana (Jingying) Liu
Paint Crew	Heeyoung Moon
Carpentry Crew	Brianna Nguyen
Paint Crew & Usher	Charlie Parris
Publicity & Running Crew	Abigail Petrilla
Publicity Crew & Box Office Crew & Usher	Aishwarya Ramasubramanian
Publicity Crew	Seohyun Ryu
Box Office Crew & Usher	Aparna Sasikumar
Carpentry Crew	Chloe Sheng
Lighting Crew	Kathryn Sun
Paint & Publicity & Box Office Crew	Divya Sundararajan
Paint Crew	Chanelle Velo
Carpentry Crew	Claire Wu
Paint Crew & Usher	Jihoo Yoon
Paint Crew	Jerry Yu
Paint Crew	Steven Zhang

WHO'S WHO



Charlie Comer

as Performer



Isabella Dufault

as Performer



Elena Higuchi

as Performer



Catie Jamieson

as Performer & Swing



Corina Lee

as Performer

WHO'S WHO



Ze Xi Isaac Lee

as Performer & Swing



Kyle Lien

as Performer



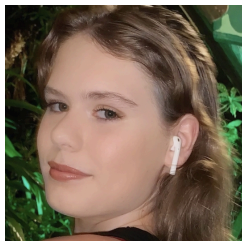
Calista Nguyen

as Performer



Riya Roy

as Performer



Delanye Saunders

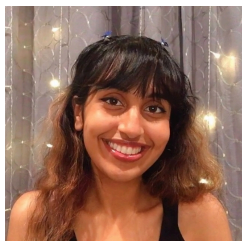
as Performer

WHO'S WHO



**Rey
Shankar**

*as Performer & Assistant to
Director*



Aditi Sreenivas

as Performer



Alyssa Wu

as Performer



Coco Wu

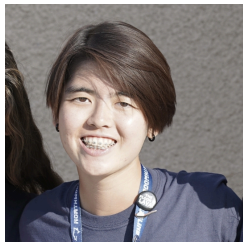
as Performer



Sophia Yang

as Performer

WHO'S WHO



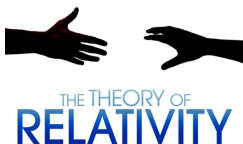
Mei Ono*

Keyboard 1, Viola



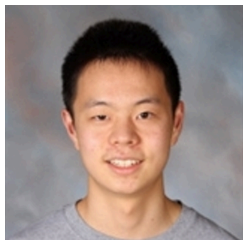
Howard Wu

Keyboard 2



Adam Bauer

Guitar



Yian Wang

Guitar



Brendan Birozy

Bass

WHO'S WHO

Matt Dimaandal

Percussion



CREW WHO'S WHO



Blake Yavuz

Technical Director



Emma Jacobs

Production Stage Manager



Shreya Srinivasan

Assistant Stage Manager



Mary Indes

Assistant Stage Manager



Viraj Kadakia

Stage Manager Intern

CREW WHO'S WHO



**Gary
Magino**

*Lighting Designer/ Master Electrician &
Sound Designer/ Engineer*



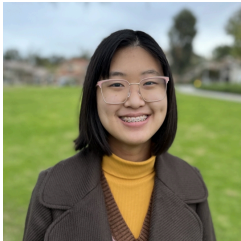
Kiara Kuriakose

Associate Lighting Designer



Abigail Wu

Costumes Coordination



Ashley Wang

Makeup & Hair Coordination



**Victoria
Gong**

*Co-Publicity Manager & House
Manager*

CREW WHO'S WHO



**Jiayi
(Annie) Li**

*Co-Publicity Manager & Box Office
Manager*

Elisa Bae

Lighting Crew



Aadya Batra

Carpentry & Running Crew

Kaia Bui

Paint Crew

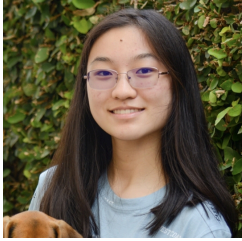


Zoe Caagoy

Sound Crew

CREW WHO'S WHO

Laura Garzon Cardenas *Paint Crew & Usher*



Angela Chen

Publicity & Box Office Crew



Toby Cole

Properties Crew

Katie Damko

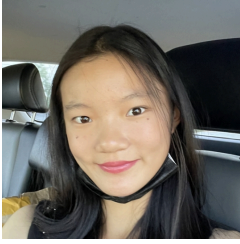
Publicity Crew & Usher



**Dristi
Goswami**

*Carpentry Crew & Box Office Crew
& Usher*

CREW WHO'S WHO



Zhuoyi (Zoe) Guo

Sound Crew



Ashley Huynh

Carpentry Crew



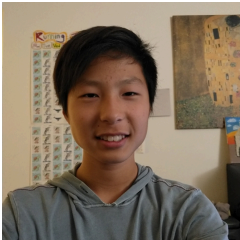
Inaya Jaffer

Carpentry Crew



Luca (Alyssa) Julian

Paint & Publicity Crew



Cole Kim

Carpentry & Running Crew

CREW WHO'S WHO



Haven Kim

Carpentry & Box Office Crew



Sara Kim

Paint Crew & Usher



Ellie Lan

Lighting Crew



Shannon Lee

Sound Crew



Rumi Liao

Paint Crew

CREW WHO'S WHO

Tae Mee (Tammy) Lim

Properties Crew



Juliana (Jingying) Liu

Paint Crew & Usher



Heeyoung Moon

Paint Crew



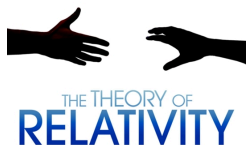
Brianna Nguyen

Carpentry Crew



Charlie Parris

Paint Crew & Usher



CREW WHO'S WHO

Abigail Petrilla

Publicity & Running Crew



**Aishwarya
Ramasubramanian**

*Publicity Crew & Box
Office Crew & Usher*



Seohyun Ryu

Publicity Crew



Aparna Sasikumar

Box Office Crew & Usher



Chloe Sheng

Carpentry Crew



CREW WHO'S WHO



Kathryn Sun

Lighting Crew



**Divya
Sundararajan**

*Paint & Publicity & Box Office
Crew*

Chanelle Velo

Paint Crew



THE THEORY OF
RELATIVITY

Claire Wu

Carpentry Crew



THE THEORY OF
RELATIVITY

Jihoo Yoon

Paint Crew & Usher



THE THEORY OF
RELATIVITY

CREW WHO'S WHO



Jerry Yu

Paint Crew

Steven Zhang

Paint Crew



We asked students from the production eight questions, and here are some of their responses:

How did you get involved in the Arts at Northwood?

- "Honestly, I started my first drama class in freshman year because I needed an art credit. From there I really liked the class and liked acting. From there Ms. Bossardet suggested I joined Bass Clef, and now I'm in the musical :)" — Charlie Comer
- "I decided to take technical theatre because I thought it would be fun to learn about the backstage work of productions. My teacher, Ms. Bossardet, told us about the opportunity to be on the cast for Theory of Relativity, so I applied and got in." — Ashley Huynh
- "I have been dancing since I was in kindergarten, so when I entered Northwood during Freshman year, I took the opportunity to try out for the dance program. I chose to do Technical Theatre in freshman year because it was something that I have never heard of before. It seemed very new to me, so I wanted to try it out. Learning about all the different crews encouraged me to take part in the productions, so I slowly became more involved in the performing arts programs." — Victoria Ji Gong
- "I go first involved in the Arts at Northwood when I took drama as my elective in my freshman year. I took intermediate drama the next year and got involved in the musical through applying for stage crew. I was able to be part of the carpentry and running crew for the musical." — Cole Kim
- "I grew up watching my brothers partake in various arts programs at Northwood and was inspired to do the same." — Mei Ono
- "I played music throughout my life, and it was just a natural continuation of what I enjoyed doing." — Yian Wan

How does the central theme of interconnectedness relate to your life?

- "I feel that all of my family, friends, peers, teachers, everyone in my life has had a huge impact on me and how I interact with others. Connectivity is a huge part of my life, and I am so glad to be able to meet so many people." — Aadya Batra
 - "Being connected to my friends and family is one of the most important things to me. Especially after the pandemic, I've seen how my emotional health had deteriorated after not being in touch with my friends and people I often hung out with pre-lockdown. The connection you feel with the people you care about allows you to feel supported and safe, and I believe that is one of the best things you can have in life." — Angela Chen
 - "The central theme of interconnectedness relates to my life because humanity is all interconnected. People, events, the world, etc., are all connected in some way, and life is woven together through these bonds." — Sara Kim
 - "I moved a lot in my life and there have been times when I've felt really alone, but I've always been able to reach out and connect with people and that's helped me a lot." — Delanye Maruska Saunders
 - "The connections we make with other people are what make life worth living. I can say with confidence that I wouldn't be the person I am today without the connections I've made with my friends. Just like the characters in the musical, I've found that our lives are all intertwined together and without each other life can become really dull." — Rey Shanker
 - "I think that the theme of interconnectedness relates to everyone's lives. We are all connected in one way or another, even if we might not know it. Our experiences and emotions make us all connected and prevent us from feeling alone." — Divya Sundararajan
-

VOICES FROM THE CAST & CREW

Are you able to relate to any of the characters or messages from the musical?

- "I feel like the song Great Expectations speaks to a lot of students, especially here at Northwood, as we all feel pressured to perform well." — Brendan Birozy
- "Yes, I'm able to relate to Catherine's feelings of pressure from the expectations around her. I hope to make my parents happy and make sure that the hard work that they've gone through to provide me with opportunities doesn't go to waste." — Elena Higuchi
- "I feel that I can most relate to certain lyrics from one of the songs from the musical, Relativity. The lyrics are 'Something awakes, it trembles and shimmers, a force that is yearning to fly'. I can really resonate with this as there are certain times when I feel a passion for something growing inside me, and I strongly wish to pursue it and chase my dream, but I am unsure about how it will play out." — Shreya Srinivasan
- "One of the characters is allergic to cats, which I can relate to. Because I still own a cat despite my allergies, I suffer every day. However, it is worth it." — Rumi Liao
- "I relate to the overall message of the musical about how we can connect and relate to each other, as well as build communities through our hardships." — Kathryn Sun
- "A lot of us, myself included, definitely relate to the messages sent in Great Expectations. High expectations are undoubtedly something prevalent in the community we live in, and I'm sure many of us want to choose a path differently from what others may want from us." — Alyssa Wu

If you wanted the audience to be able to take away one message from the musical, what would it be?

- "Everyone has their own unique personalities and different experiences, but in the end, it's realizing that you have other people around you who will help guide you on your journey, and learn the value of love, friendship, and support." — Sophia Yang
- "Even if you feel incredibly alone at a particular moment, there will always be a community out there for you." — Kiara Kuyiakose
- "I want the audience to understand the significance of human connections and the importance of offering support to those around us." — Jiayi (Annie) Li
- "This musical, despite seeming to showcase various stories, reveals that all people are interconnected through the experiences, both challenging and joyful, that they live through. Each of the characters is living significantly different lives, yet they all experience struggles in their relationships and with coming to terms with their identities." — Aditi Sreenivas
- "One message I would want the audience to take away is to never take the people who love and support you for granted. Cherish the time you have with those people and never forget the accomplishments you have made in your life. Be proud of yourself." — Calista Nguyen
- "There are many types of people in this world, all with different experiences. We show sympathy and respect towards their diverse experiences because not all people are the same." — Haven Kim

VOICES FROM THE CAST & CREW

During the Covid-19 pandemic, a lot of us struggled with isolation. With this in mind, why do you think this musical was a great choice for this year?

- "The overall theme of interconnection encourage us who are coming back to a more social environment to appreciate the impact other people have on our lives." — Howard Wu
- "I think this musical was a great choice for this year because the musical reminds us how we connect with others. It helps us remember that we are more connected than we think, and through our shared experiences we can create communities." — Kathryn Sun
- "When we became isolated, a lot of our past knowledge started to disappear, and this musical will help us reciprocate." — Abigail Wu
- "Everyone can relate to the play through their experiences. They understand that doing things alone isn't the best way to do things, and that everyone needs someone to help out from time to time." — Kyle Lien
- "After a global pandemic and feeling isolated for two years, it can be hard to want to reach out to others and make new connections. This musical reminds us that we all are connected by not only the challenges we have faced together, but also by our triumphs and the exciting potential that the future holds." — Catie Jamieson
- "2020 was a year defined by isolation, by our inability to connect to those around us. With this in mind, The Theory of Relativity is a wonderful choice for this year; it emphasizes the unwavering support that surrounds us, and the constant presence of love in the face of hardship." — Isabella Dufault

Who or what would you like to express gratitude for in this production?

- "I definitely want to express gratitude for Ms. Keiko in this production. I've never had vocal training of any kind, so I've learned so much from her. She's really helped me better myself in terms of my vocals, and taught me so many things about what it means to be a performer." — Ze Xi Isaac Lee
 - "I would like to express gratitude towards the cast, crew, directors, and stage management. The cast has been amazing to work with, everyone is so incredibly talented and kindhearted. The crew amazes me every day, it is so cool to know that they've created everything for this production. The directors are so incredible, they've taken nothing but music and a script and turned it into an amazingly beautiful production. Finally, stage management I am so glad to be a part of this team, and it's been breathtaking learning the ins and outs of theatre." — Mary Indes
 - "I'm thankful for everyone who participated in the production to make the show come to life, I'm honored to be working with such a group of kind and creative artists." — Jerry Yu
 - "I would like to express gratitude to the whole cast and crew for all their hard work, along with the hard-working directors for all their time they've committed to run the production smoothly." — Viraj Kadakia
 - "I would like to thank our crews and actors for creating an amazing production." — Toby Cole
 - "Ironically, I'm thankful for the rehearsals that brought on awkward introductions and painstaking small talk. I would have never mustered the courage to talk to the cast members otherwise." — Corina Lee
-

VOICES FROM THE CAST & CREW

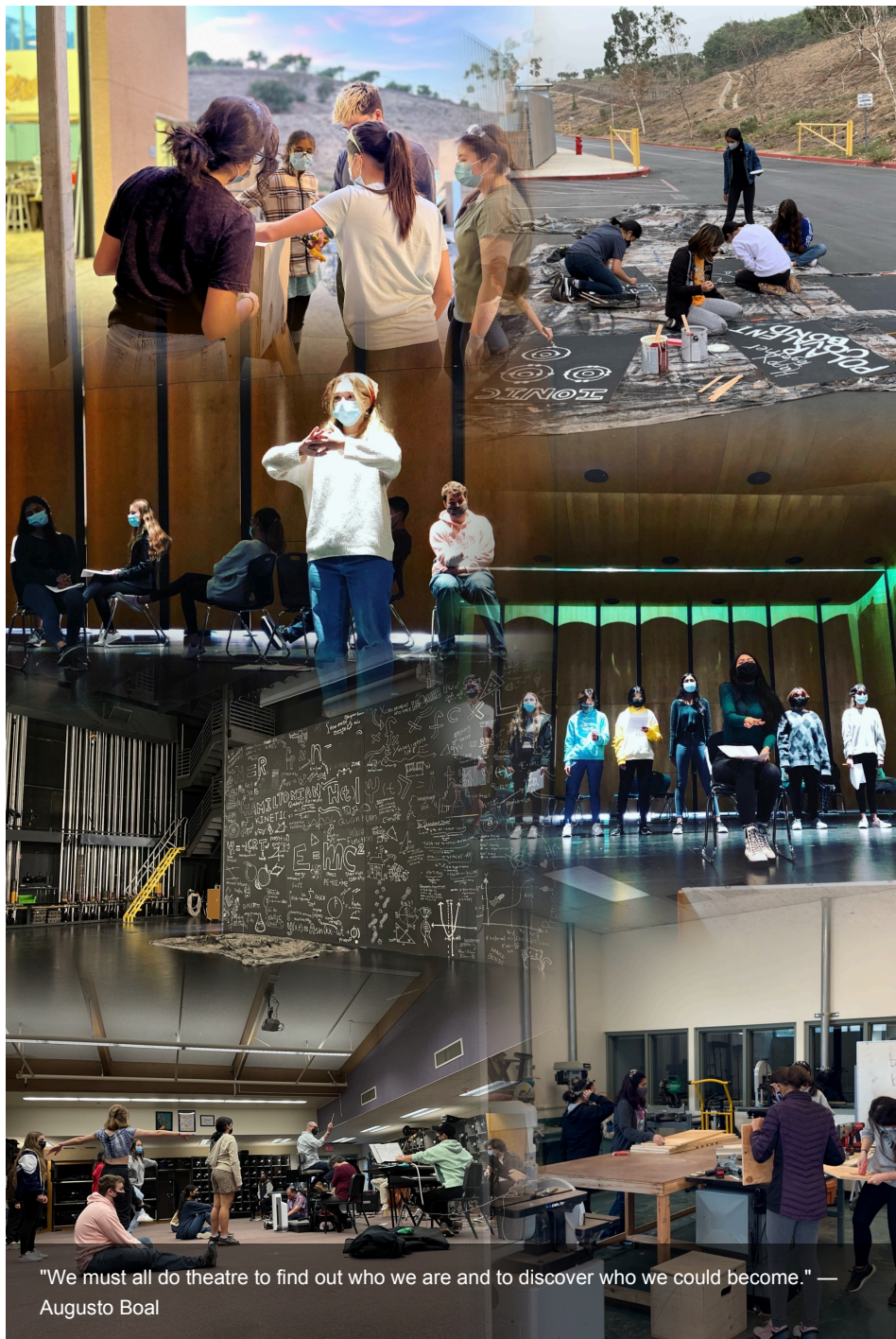
What has been your favorite part of the rehearsal/staging/designing/building process for the musical?

- "I liked painting the various props in the musical, such as the chalkboard in back and the fly in boards with the equations. It allowed me to express my creativity when designing them (as well as recalling the various equations from my calculus and science classes)" — Luca Julian
- "My favorite part of being an Assistant Stage Manager for the musical was getting to connect with the cast and my team to help make the production of this musical the very best it can be. I enjoyed being there for the cast and directors to assist them with anything they need. I'm so inspired by everyone's effort and hard work that has gone into this production, and I am truly grateful to be a part of this." — Shreya Srinivasan
- "I have loved being able to make connections with people that I didn't previously know. In a lot of the past productions, those involved were often familiar to me, but this experience differed in that it allowed me to meet people I had not engaged with in previous shows. I am delighted to see the amount of dedication and passion in the people around me, and I am grateful to have been able to cultivate strong connections in the show." — Aditi Sreenivas
- "Every aspect of participating in the carpentry crew is fun. In my opinion, I liked to cut the wood with the panel saw and use the staple gun when assembling the boxes." — Brianna Nguyen
- "My favorite part of the process for the musical was definitely designing the chalk wall for the backdrop. It was really fun to come up with new ideas that related to the characters of the musical and the overall theme." — Sara Kim
- "Bonding with the cast and being able to work with everyone through rehearsals has been my favorite process of putting together this musical. One of the most amazing parts of rehearsing is hearing how euphoric our voices sound together and feeling the connection between everyone." — Calista Nguyen

How has this musical allowed you to express yourself in various ways?

- "It has allowed me to help the cast take their characters and put them in a visual reality through hair and makeup. Furthermore, it has reminded me of how much I love costumes, hair, and makeup and has given me a chance to use that passion for this incredible opportunity." — Ashley Wang
 - "This musical has been easy to express myself because I was able to give my input for how we should go around certain issues and in the end I am very proud of my work." — Blake Yavuz
 - "It has allowed me to find a "family" who share my interests. I feel like I can be myself around them and not be afraid to make mistakes." — Zoe Guo
 - "This musical allowed me to explore different sides of production when I had solely worked on paint only. Given the opportunity to stretch out of my comfort zone allowed me to appreciate the musical in more than one aspect!" — Shannon Lee
 - "Ever since the pandemic started, I didn't have many opportunities to participate in extracurricular activities, and this musical has given me the chance to learn new things that aren't always readily available as classes, such as carpentry." — Dristi Goswami
 - "It allowed me to be a part of something I love and have a passion for while being with my friends. Theory of Relativity has allowed me to express my love for technical theatre and contribute to our vision of the musical." — Kathryn Sun
-

PHOTOS



"We must all do theatre to find out who we are and to discover who we could become." — Augusto Boal

UPCOMING EVENT

FIND YOUR COURAGE

THE
ASHGIRL

COMING MARCH 15-19

Northwood Arts would like to thank Broadway Arts Studio for their generosity!

@BroadwayArtsStudio
BroadwayArtsStudio.com



Learn From Broadway Pros



SING DANCE ACT
MUSICAL THEATRE